

Background

The ILO Declaration on Social Justice for a Fair Globalisation (2008) states that “productive, profitable and sustainable enterprises, together with a strong social economy and a viable public sector, are critical to sustainable economic development and employment opportunities”.

Today, the Social and Solidarity Economy (SSE) is a reality in many people’s lives because it promotes values and principles that focus on people’s needs and on their communities. In a spirit of voluntary participation, self-help and self-reliance, and through enterprises and organizations, it seeks to balance economic success with fairness and social justice, from the local level to the global level.

The concept of SSE cuts across all four dimensions of the ILO’s Decent Work Agenda. A high-level capacity building programme on SSE was proposed by more than 200 participants on the occasion of the ILO Regional Conference on Social Economy held in Johannesburg, South Africa, in October 2009.

The first three editions of the Academy were organized by the International Training Centre of the ILO (ITC-ILO) in Turin (Italy) in 2010, in Montreal (Canada) in 2011 and in Agadir (Morocco) in 2013. Known as the “ILO Social and Solidarity Economy Academy (SSE Academy)”, this inter-regional training event has gathered together, in each edition, more than 70 practitioners and policy-makers from around the world, to share their experiences and meet leading SSE specialists.

Objectives

This year the Academy will have a special focus on the Social and Solidarity Economy Organizations (SSEOs) added value in terms of inclusivity and sustainability and the role that the SSE can play in the debate of the post-2015 development agenda.

The main objective will be to generate a better understanding of the concept of SSE and its possible contribution to inclusive and sustainable development.

At the end of the academy, the participants will:

- Have a better understanding of the areas in which the Social and Solidarity Economy can be applied and implemented successfully such as employment creation and preservation, social protection, social dialogue, green jobs, legal and policy frameworks, informal economy and local economic development.
- Have been acquainted with a multitude of social and solidarity experiences, strategies and tools from around the world, with a particular emphasis on South-South and triangular cooperation.

Partners

The partners of this edition are CIRIEC (International Centre of Research on Social and Cooperative Economy), EESC (European Economic and Social Committee), FACAMP (Campinas Faculties), BNDES (Brazilian Economic and Social Development Bank), SEBRAE (Brazilian Service of Support for Micro and Small Enterprises), SENAES (National Secretariat of Solidarity Economy in the Brazilian Ministry of Labour) UNISOL (Union of Cooperatives and Solidarity Enterprises of Brazil) and FecomercioSP (Federation of Trade in Goods, Services and Tourism of the State of São Paulo, Brazil).

For more information please contact us at:

Academy on Social and Solidarity Economy

www.itcilo.org/socialeconomy

<http://www.ilo.org/coop>

Programme for Workers’ Activities (ACTRAV) of the ITC-ILO

actrav_turin@itcilo.org

<http://actrav.itcilo.org>

Collective Brain of the SSE Academy: <http://www.sseacb.net/>

Meeting Point for South-South and Triangular Cooperation on the SSE: <http://www.sstcsse.net/>

Group SSE Academy on LinkedIn: <http://www.linkedin.com/groups/ILO-SSE-Academy-5105297>

Group SSE Academy on Facebook: <https://www.facebook.com/groups/118163071711976/>

SSE Academy on Twitter: <https://twitter.com/sseacb>.

Group SSE Academy on Google+: <https://plus.google.com/communities/11811884750476528443>

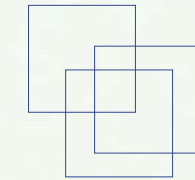
Copyright © International Training Centre of the International Labour Organization, 2014. All rights reserved.
Design Luca Fiore – Printed by the International Training Centre of the ILO, Turin, Italy

Made of paper awarded the European Union Eco-label,  reg.nr FR/011/002, supplied by International Paper.

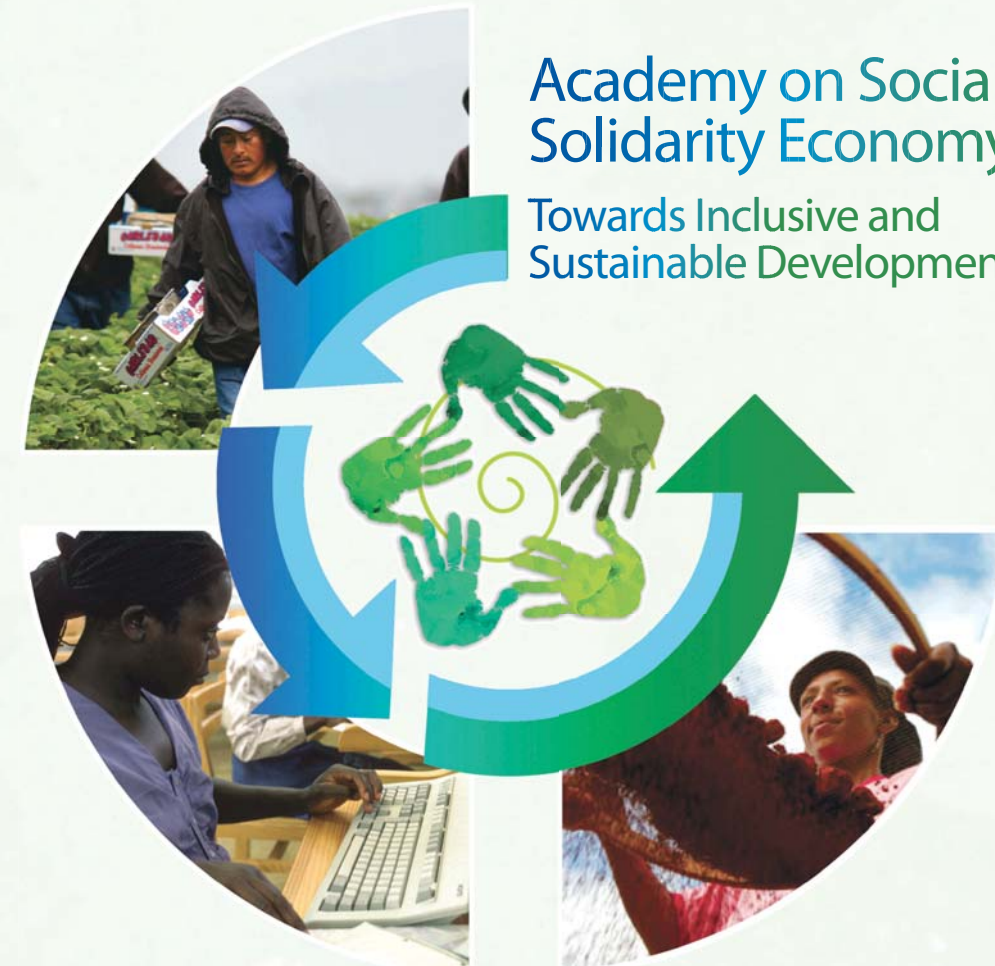


International Labour Organization

ACTRAV



ITC
International Training Centre



Academy on Social and Solidarity Economy

Towards Inclusive and Sustainable Development

Programme



Patrocínio



Programme

	Monday 28/07	Tuesday 29/07			Wednesday 30/07			Thursday 31/07			Friday 01/08			
9:00 10:30	08:30-09:00 Registration	Study visits			Feedback to field visits Interactive session Facilitators ITC-ILO			How promote SSE through the South-South and Triangular Cooperation (SSTC)? Leandro Morais - FACAMP, Paul Singer - SENAES, Ben Quinones - RIPESS, Giulia Massobrio - CSA Moderator Anita Amorim - ILO			HOW can SSE actors contribute to an inclusive sustainable development? Round table discussion			
	9:00-10:00 Opening Session ILO/FACAMP/SENAES/SEBRAE/BNDES/ MUNICIPALITY OF CAMPINAS	1	2											
11:00 12:30	10:30-12:30 The SSE and Decent Work Peter Poschen, Humberto Villasmil - ILO Interactive session on contents of distance learning modules 1-6 Facilitators ITC-ILO	The transition to the formal economy through the SSE	SSE in Value chains	SSE: Why should trade unions care? Potential and pitfalls of SSE in this age Carmen Benitez, Ben Said Insa Dia - ILO	Supporting SSE in South Africa Grania Mackie, Cebisile Nyambe - ILO (EN/ES/PT)	SSE in Uruguay Fernando Berasain - INACOOP Uruguai (ES/EN)	How promote SSE and SSTC: Regional and Inter-Regional Perspectives Miguel Angel Contreras - ISM, Juan Miguel Bacic - UNICAMP, Antônio Lisboa - CUT Moderator Anita Amorim - ILO			Open space "What next?" Conclusions FACAMP/CIRIEC/ILO				
									12:30 – 13:00 South-South Cooperation Meeting Point / Collective Brain platforms Fernando Baptista, Laure Buridard		Evaluation, Certificates and Closure			
Lunch break											Final Lunch			
14:00 17:00	14:00-16:00 Is SSE currently contributing to inclusive and sustainable development? Can SSE play a role in the definition of the SDGs and the post-2015 development agenda? Peter Utting - UNRISD, Miguel Angel Cabra de Luna - EESC Ben Quinones - RIPESS Daniela Metello - CIISC Moderator Roberto Di Meglio - ILO	The transition to the formal economy through the SSE (continuation)	SSE in Value chains (continuation)	Empresas recuperadas	Workshops			Workshops						
					1	2	3	1	2	3		1	2	3
	16:30-17:30 Introduction to the study visits Facilitators ITC-ILO							Promoting SSEOs in value chains for inclusion and sustainability Augusto Togni - SEBRAE, Angélica Rotondaro - Univ. St. Gallen, Vanusa Toledo - COACIPAR (PT/EN)	Employment preservation and creation through workers cooperatives: the cases of Brazil, Argentina and Quebec (Canada) Aloraldo do Nascimento - CUT, Arildo Mota Lopes - UNISOL, Nathalie Guy - CSN, Claude Dorion - DSI, Hugo Villar - CTA Moderator Pierre Laliberté - ILO (ES/EN)	Inclusive and sustainable development through SSEOs in the health sector Nancy Neamtan - Chantier de l'économie sociale, Flaviano Zandonai - URICSE (PT/EN)		Green Grants (Bolsa verde): sharing good practices and peer-to-peer learning + cases of Americas, Africa, Asia Peter Poschen, Paulo Sergio Muçouçah - ILO (PT/EN)	The role of unions regarding the formalization of the informal economy: the challenge of the rights approach on SSE through peer-to-peer cooperation Ghislaine Saizonou - ITUC AFRICA, Laerte Teixeira - TUCA, Bidur Karki - GEFONT (Nepal) Moderator Jesús García Jiménez - ILO (ES/EN)	Informal economy: Waste Pickers; Binational South-South cooperation PET (Uruguay, Brazil) Valmor Schiochet - SENAES, Nelsa Nespola - SESAMPE (PT/ES)

SSE: Social and Solidarity Economy; **SDGs:** Sustainable Development Goals; **SSEOs:** Social and Solidarity Economy Organisations.

ILO: International Labour Organisation; **ITC-ILO:** International Training Centre of the ILO; **FACAMP:** Faculties of Campinas, Brazil; **SENAES:** National Secretariat of Solidarity Economy in the Ministry of Labor and Employment of Brazil; **SEBRAE:** The Brazilian Service of Support for Micro and Small Enterprises; **BNDES:** Brazil Economic and Social Development Bank; **UNRISD:** United Nations Research Institute For Social Development; **EESC:** European Social and Economic Committee; **RIPESS:** Intercontinental Network for the Promotion of Social Solidarity Economy; **CIISC:** Comitê Interministerial para Inclusão Social e Econômica dos Catadores de Materiais Reutilizáveis e Recicláveis; **INACOOP:** Uruguay National Institute of Cooperatives; **COACIPAR:** Paraná Agricultural and Family Cooperatives; **CUT:** Brazilian Unified Workers' Central; **UNISOL:** Brazilian Cooperatives and Solidarity Enterprises Central; **CSN:** Canadian Confederation of National Trade Unions; **DSI:** Développement Solidaire International; **CTA:** Argentinian Workers' Central; **EURICSE:** European Research Institute on Cooperatives and Social Enterprises; **TUCA:** Trade Union Confederation of Americas; **ISM:** Social Institute of Mercosur; **UNICAMP:** State University of Campinas; **ITUC:** International Trade Union Confederation; **GEFONT:** General Federation of Nepalese Trade Unions; **SESAMPE:** Secretariat of Social and Solidarity and the Promotion of Small and Medium Enterprises of the State Rio Grande do Sul, Brazil; **CIRIEC:** International Center of Research and Information on the Public, Social and Cooperative Economy.